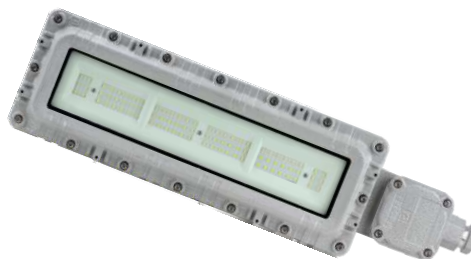


## BPY96 series explosion-proof LED fluorescent lamp

### Scope of application

1. Used in Zone 1 and Zone 2; Zone 21 and Zone 22; IIA, IIB, IIC;
2. Temperature group: T1~T6;
3. Suitable for energy saving renovation projects and places where maintenance and replacement are difficult;
4. Widely used in petroleum exploitation, refining, chemical industry, military industry, textile, food processing and offshore oil platform, tanker and other places of lighting.



### Feature of product

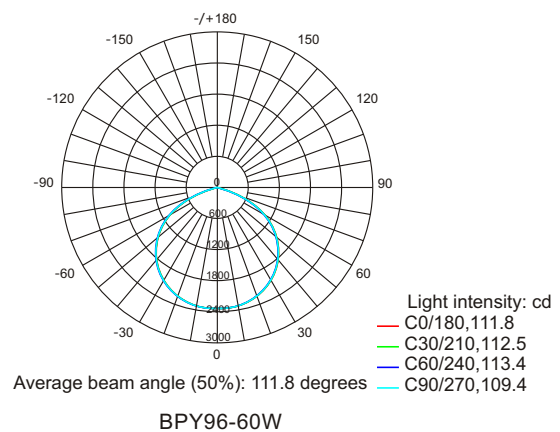
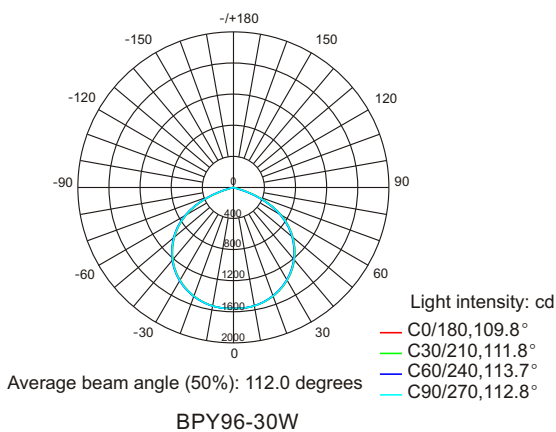
1. The shell of the product is made of aluminum alloy die-casting. After shot blasting, the surface is sprayed with high-voltage electrostatic plastic, which is corrosion-resistant and anti-aging; The transparent parts are made of physically toughened glass with high light transmittance and ultraviolet resistance; Exposed stainless steel fasteners with high corrosion resistance; The joint surface is made of high temperature resistant silicone rubber seal ring, with protection performance of IP66, which can be used indoors and outdoors; It is equipped with special terminal blocks, with reliable wire connection and convenient maintenance;
2. The natural ventilation convection heat dissipation technology is adopted, and the air flow is used to effectively dissipate the heat to the space outside the lamp through the heat dissipation channel and heat flow channel to ensure the long service life of the lamp;
3. Independent anti surge device of power module can effectively filter the damage to lamps caused by voltage fluctuation caused by large equipment; Special constant current waterproof power supply, wide voltage input, constant power output, with short circuit, high temperature and other protection functions; Power factor  $\cos \Phi = 0.95$ ;
4. The light source module adopts chips of international famous brands, which are reasonably arranged, unidirectional lighting, uniform and soft light, light efficiency  $\geq 120\text{lm/W}$ , and high color rendering  $R_a > 70$ ;
5. This series of products can be equipped with a combined emergency device, which can automatically switch to the emergency lighting state when the power supply is cut off; Emergency parameters: a) Emergency starting time (s):  $\leq 0.3\text{s}$ ; b) Charging time (h): 24; c) Emergency power (W):  $\leq 50$ ; d) Emergency lighting time (min):  $\geq 60, \geq 90$ .

## Technical parameter

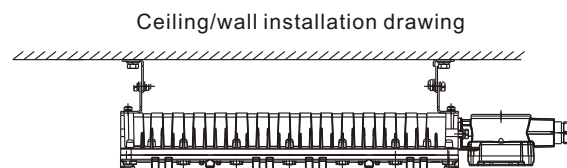
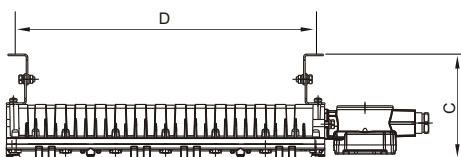
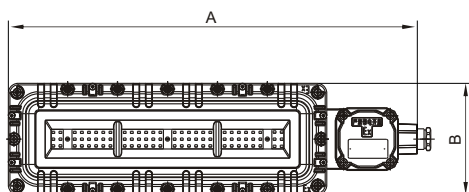
Model	Explosion proof sign	light source	Lamp type	Power (W)	Luminous flux (Lm)	Color temperature (K)	Weight (kg)
BPY96-□	Ex db IIC T6 Gb Ex tb IIIC T80°C Db	LED	I	20~30	2400~4800	3000~5700	5
			II	40~60	4800~7200		7

Rated voltage/frequency	Inlet thread	Cable outer diameter	Emergency charging time	Emergency starting time	Emergency lighting time	Degree of protection	Anti corrosion grade
220V/50Hz	G3/4	Φ10~14mm	24h	≤0.3s	≥90min	IP66	WF2

## Light distribution curve



## Appearance and installation example



Model	Power	A(mm)	B(mm)	C(mm)	D(mm)
I	20~30W	516	140.5	133	380
II	40~60W	716	140.5	133	579