

## BED61 series explosion-proof maintenance-free energy-saving LED lamp

### Scope of application

1. Used in Zone 1 and Zone 2; Zone 21 and Zone 22; IIA, IIB, IIC;
2. Temperature group: T1~T6;
3. Suitable for energy saving renovation projects and places where maintenance and replacement are difficult;
4. Widely used in petroleum exploitation, refining, chemical industry, military industry, textile, food processing and offshore oil platform, tanker and other places of lighting.



### Feature of product

1. The radiator design is made of special aluminum alloy die-casting, and the surface is high-voltage electrostatic spray;
2. Stainless steel exposed fasteners with high anti-corrosion performance;
3. The flame-proof joint surface of the mouth is pure flame-proof structure, and the explosion-proof performance is more reliable;
4. Multi-point lighting, high light utilization rate, uniform illumination without glare;
5. Constant current power supply with wide voltage input, constant current output, with protection functions such as shunt, anti-surge, over-current, open circuit, open circuit, high temperature, and anti-electromagnetic interference;
6. Microwave induction dimming system, energy saving and environmental protection;
7. Power factor  $\cos\phi \geq 0.95$ ;
8. It can be equipped with a combined emergency device according to the use requirements. When the power supply is cut off, it can automatically switch to the emergency lighting state;
9. Steel pipe or cable routing.

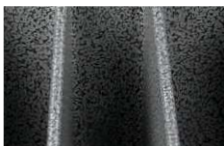
### Featured display



Well-known brand chips, reasonable arrangement, unidirectional light emission, uniform and soft light, light efficiency  $> 120\text{lm/W}$ , high color rendering  $R_a > 70$ , long service life, green environmental protection, color temperature 3000K~5700K.



High-strength material, transparent anti-glare glass cover, strong impact resistance and thermal shock resistance, high light transmittance.



The natural ventilation convection heat dissipation technology uses air flow to dissipate to the surface of the heat sink of the lamp through the heat dissipation channel and heat flow channel, effectively dissipating the heat of the LED light source and ensuring the long-life operation of the LED explosion-proof lamp.



Microwave induction dimming system:  
 a When the human body is within the range of the lamp (5~10 meters adjustable), the lamp runs at full power;  
 b When the human body leaves (0-30S adjustable), the lamp will be reduced to 20-50% power operation, energy saving and environmental protection.

## Technical parameter

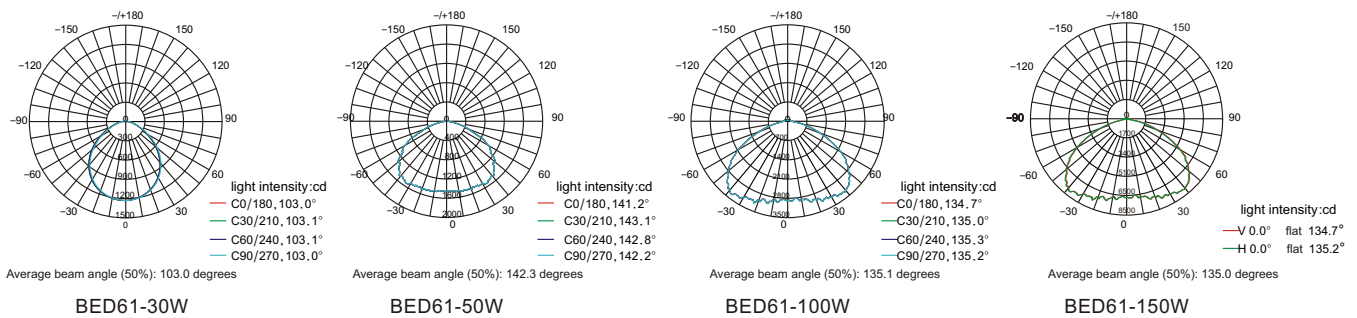
Model	Explosion-proof mark	light source	Lamp type	Power (W)	Luminous flux (Lm)	Color temperature (k)	Weight (kg)
BED61-□	Ex db II C T6 Gb Ex tb III C T80°C Db	LED	I	10~30	1200~3600	3000~5700	2.4
			II	40~60	4800~7200		3.5
			III	70~100	8400~12000		5.4
			IV	120~150	14400~18000		6

Rated voltage/frequency	Inlet thread	Cable outer diameter	Protection class	Corrosion class
AC220V, DC24, 36V, AC24, 36V/50Hz	G3/4	Φ10~Φ14mm	IP66	WF2

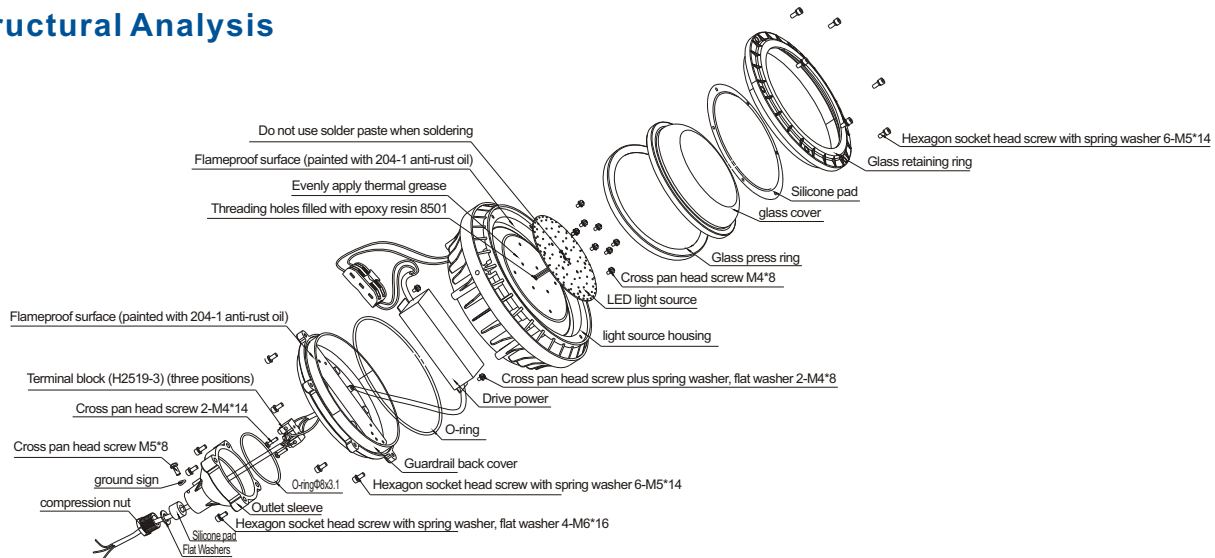
## Emergency parameters/intelligent dimming

Emergency start time (S)	Charging time (h)	Emergency power (W)	Emergency lighting time (min)
≤ 0.3	24	10~30 optional	≥ 60min, ≥ 90min optional

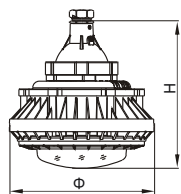
## Light distribution curve



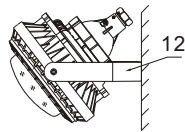
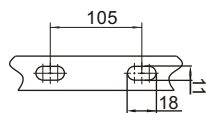
## Structural Analysis



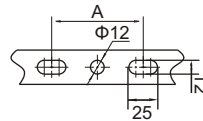
## Appearance and installation example



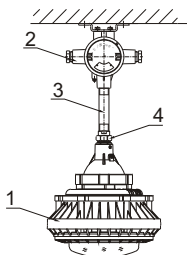
Ceiling box installation dimensions



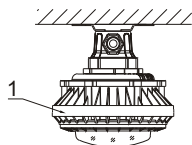
z: conventional bracket type



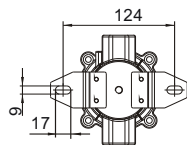
Bracket Mounting Dimensions



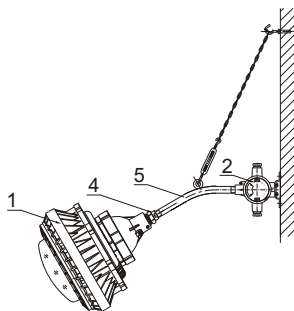
g: boom type



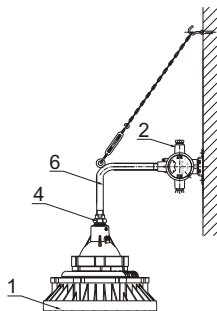
x: Ceiling



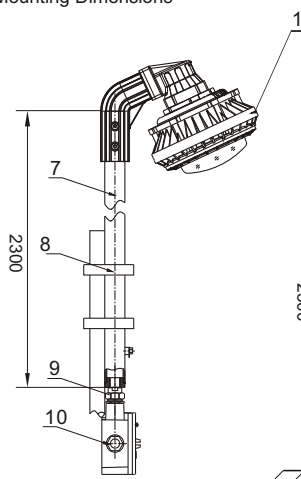
Ceiling Mounting Dimensions



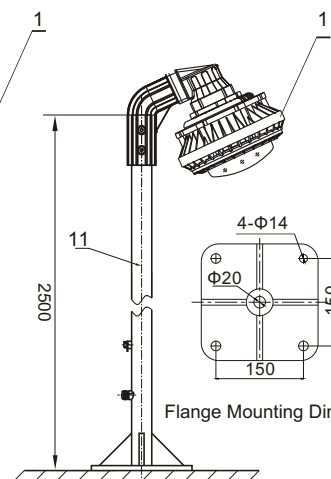
b1: Wall 30°



b2: Wall 90°



h: guardrail type



f: Flange

## Appearance and installation example

Number	Specifications	Type	Power Range (W)	Φ(mm)	H(mm)	A(mm)
1	BED61-30W	I	10-30	181	195	80
2	BED61-60W	II	40-60	225	216	95
3	BED61-100W	III	70-100	254	230	95
4	BED61-150W	IV	120-150	291	235	120

Number	Name	Remark	Number	Name	Remark
1	Explosion-proof maintenance-free energy-saving LED light	/	7	1 1/4 guardrail light pole + aluminum alloy elbow	User selection
2	Explosion-proof chandelier box AH-dG3/4	User selection	8	U-shaped pipe clamp + pressure plate + nut + gasket	User selection
3	300mmG 3/4 straight rod	Length optional User optional	9	Explosion-proof pipe joint BGJ-G 3/4 outside	User selection
4	Explosion-proof union BHJ-G 3/4 one inside and one outside	User selection	10	Explosion-proof junction box AH-G 3/4C tee flat cover	User selection
5	300mmG3/4 bending rod with tie bar 30°	User selection	11	1 1/4 flange light pole + aluminum alloy elbow	User selection
6	300mmG3/4 bending rod with tie bar 90°		12	Mounting brackets	User selection