

## BXM (D) series explosion-proof lighting (power) distribution box

### Scope of application

1. Used in Zone 1 and Zone 2; Zone 21 and Zone 22; IIA, IIB, IIC;
2. Temperature group: T1~T6;
3. Suitable for energy saving renovation projects and places where maintenance and replacement are difficult;
4. Widely used in petroleum exploitation, refining, chemical industry, military industry, textile, food processing and offshore oil platform, tanker and other places of lighting.



### Feature of product

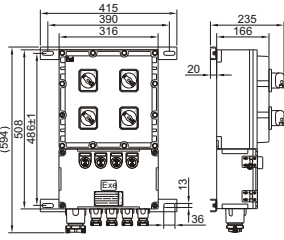
1. The shell is made of aluminum alloy die-casting with high-voltage electrostatic spraying on the surface, which is corrosion-resistant and anti-aging;
2. This series of products are of composite structure: the main chamber is of flameproof structure, and the wiring chamber is of increased safety structure;
3. The switch handle is usually made of PC material, and can also be made of metal according to user requirements. The main switch and sub switch operation panels can be distinguished according to color. The switch handle can be configured with padlock to prevent misoperation;
4. Circuit breakers, AC contactors, thermal relays, surge protectors, universal change-over switches, fuses, transformers, electricity meters and other electrical components can be installed according to user requirements;
5. Each circuit is equipped with power on signal indicator;
6. The sealing strip adopts the advanced technology of cast-in-place foaming one-time forming, with high protection performance;
7. The vertical installation is equipped with corresponding mounting bracket. For outdoor use, rainproof cover or protective cabinet can be added. The material can be customized according to user requirements;
8. Steel pipe or cable wiring is acceptable.

### Technical parameter

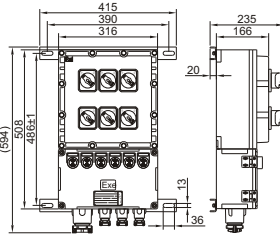
Model	Rated voltage	Rated current of main circuit	Rated current of branch circuit	Number of branches	Explosion proof sign
BXM(D)	220V 380V	6A、10A、16A、20A、 25A、32A、40A、50A、 63A、80A	1A~50A	2、4、6、 8、10、12	Ex db IIB T6 Gb Ex db eb IIB T6 Gb Ex db eb IIC T6 Gb Ex tb IIIC T80°C Db
		100A、125A、160A、 200A、225A、250A、 315A、400A、500A、 630A	1A~250A		Ex db IIB T4 Gb Ex db eb IIB T4 Gb Ex db eb IIC T4 Gb Ex tb IIIC T130°C Db

Cable outer diameter	Inlet thread	Degree of protection	Anti corrosion grade
Φ7~Φ80mm	G1/2~G4 M20-M110 NPT3/4-NPT4	IP66	WF1 *WF2

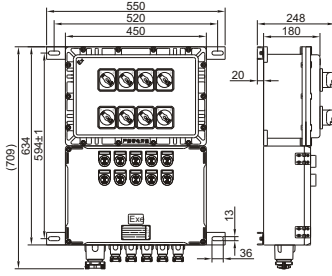
## Appearance and installation examples



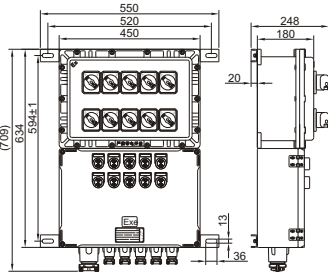
BXM(D)-4XX (II B)



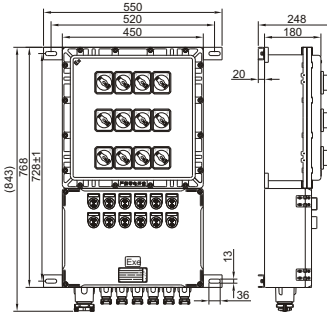
BXM(D)-6XX (II B)



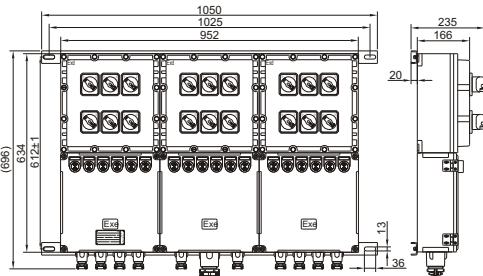
BXM(D)-8XX (II B)



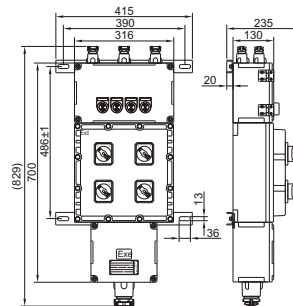
BXM(D)-10XX (II B)



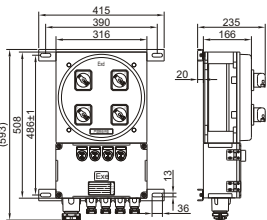
BXM(D)-12XX (II B)



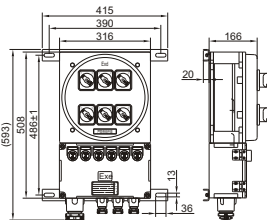
BXM(D)-18XX (II B)



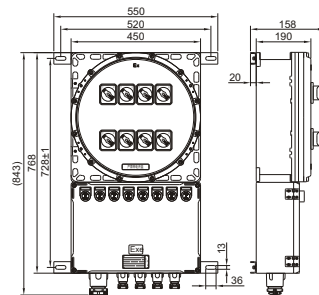
BXM(D)-4XD (II B)



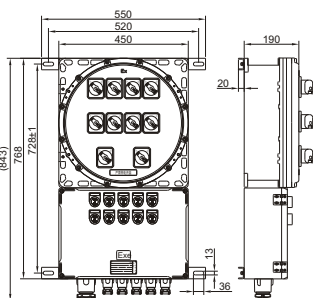
BXM(D)-4XX (II C)



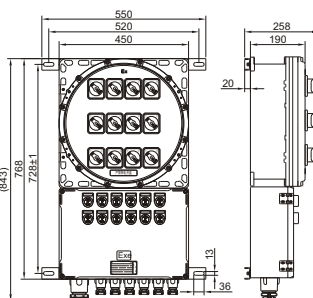
BXM(D)-6XX (II C)



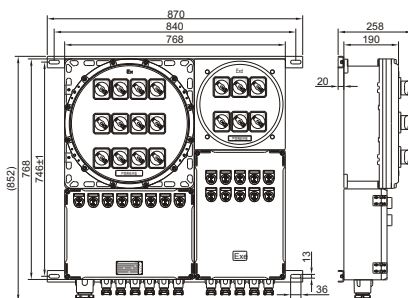
BXM(D)-8XX (II C)



BXM(D)-10XX (II C)



BXM(D)-12XX (II C)



BXM(D)-18XX (II C)

Electrical